

# KARIBAN

**REFERENCE :** K257

**SIZES :** XS\_S\_M\_L\_XL\_XXL\_3XL

**COMPOSITION :**

Main fabric : Ring spun Combed Cotton pique preshrunk - 180

Yarn count: 30/S

Gauge: 24

Main fabric : Ring spun Combed Cotton/Viscose pique preshrunk 90/10 - 180 For heather colors 90%cotton / 10% viscose

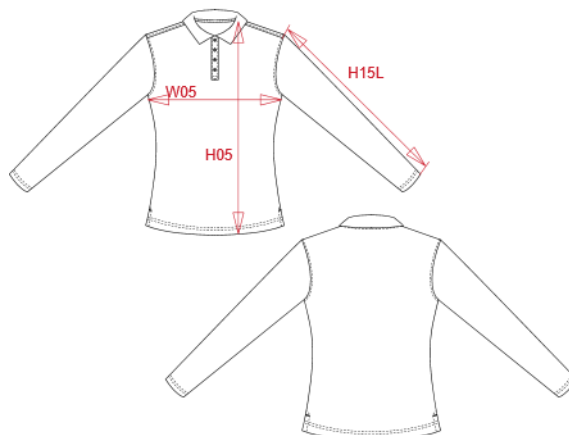
**WEIGHT :**

Main fabric : 180 gsm

Main fabric : 180 gsm

**ARTICLE WEIGHT :**

195 gr/pc



DESCRIPTION							
<b>Français :</b> Polo piqué manches longues femme							
<b>English :</b> Ladies' piqué long sleeve polo shirt							
<b>Nederlands :</b> Piqué-damespolo lange mouwen							
<b>Deutsch :</b> Damen Langarm-Polohemd. Baumwollpiqué							
<b>Español :</b> Polo piqué de manga larga para mujer							
<b>Italiano :</b> Polo piqué donna maniche lunghe							
<b>Português :</b> Polo piqué de senhora de manga comprida							

MEASUREMENT							
Description	XS	S	M	L	XL	XXL	3XL
<b>H05 (L)</b> Hauteur totale / Total height	60	62	64	66	68	70	72
<b>W05 (L)</b> 1/2 largeur poitrine à 1.5cm de l'emmanchure / 1/2 chest width at 1.5cm below armhole	43	46	49	52	55	58	61
<b>H15L (L)</b> Longueur manche longue / Long sleeve length	57,75	58,75	59,75	60,75	61,75	62,75	63,75

CARE LABEL				

PACKING	
Box	40 pcs / box XS-S => L:60cm W:40cm H:23cm GW:9.80kg NW:8.00kg M-L => L:60cm W:40cm H:26cm GW:10.20kg NW:8.30kg XL => L:60cm W:40cm H:26cm GW:11.80kg NW:9.80kg XXL-3XL => L:60cm W:40cm H:26cm GW:11.90kg NW:9.90kg

COLORS	PANTONE SERIGRAPHIE
White	White
Black	Black
Navy	433C
Red	200C
Dark grey	447C
Oxford grey	Based on Cool gray 7C
Light royal blue	653C
Orange	1585C
Yellow	1235C
Forest green	5605C
Wine	504C
Sky blue	278C
Tropical blue	7468C
Fuchsia	7425C
Kelly green	7727C